

# ECO 5

**Ultra**-Portable, **Ultra**-Affordable, **Color** Doppler



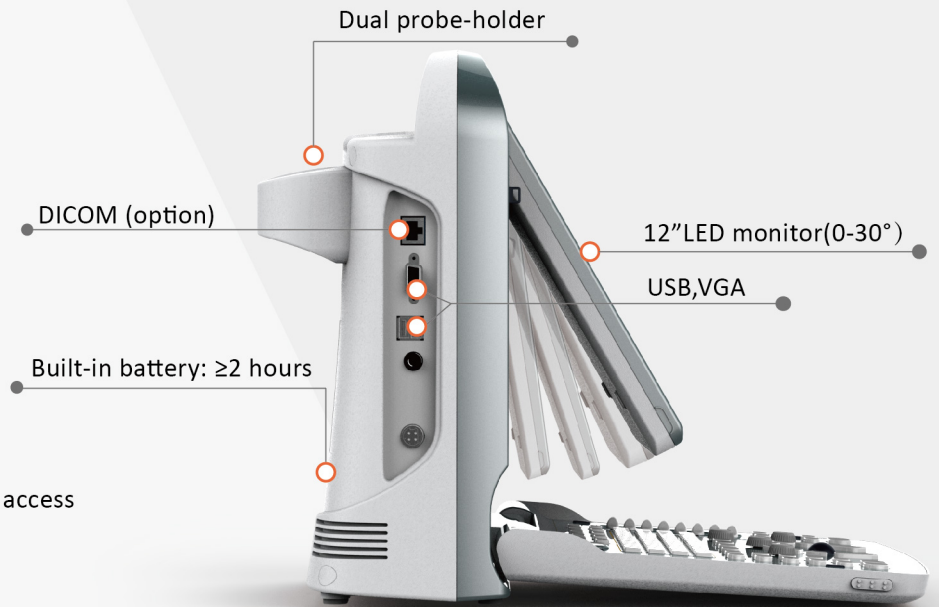
**CHISON**  
Value Beyond Imaging

## Eco-friendly

- Less radiation
- Lower power consumption
- Longer life: LED

## Ergonomic

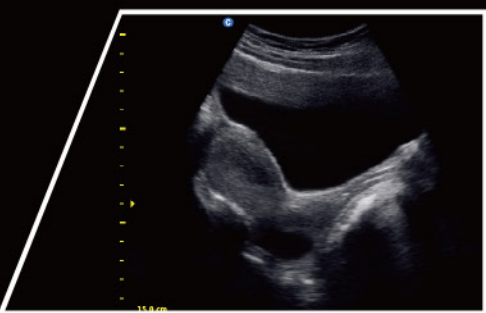
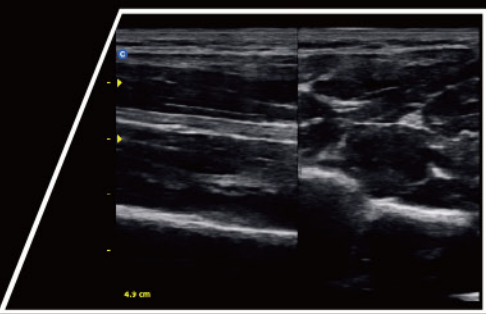
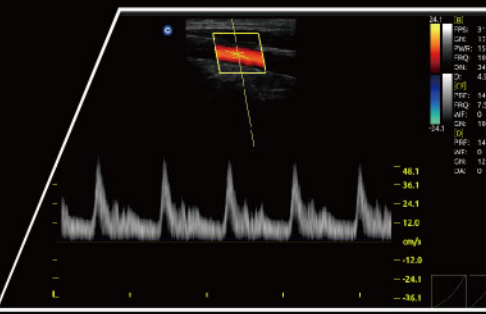
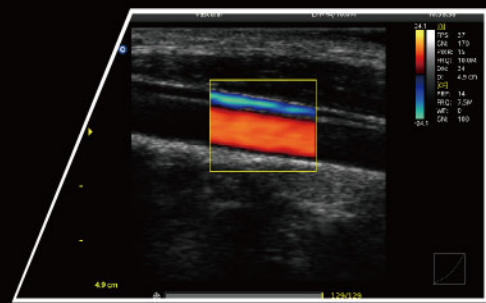
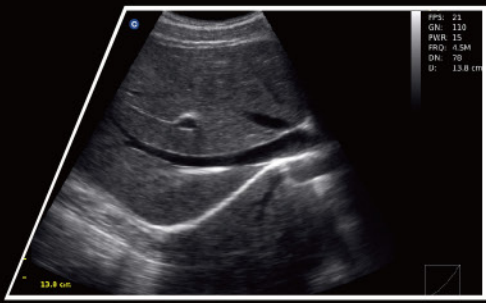
- Rotatable LED monitor (0~30°): tailor to different viewing angles
- Unique LED: reduce eye fatigue
- Keyboard design: for easy and quick access
- Full screen display mode



## Excellent

- Full digital beam-former
- Color doppler technology
  - Double frame rate technology
  - Color priority
  - Color filter
- Applications
  - Abdomen, OB&GYN, Urology, Vascular,
  - Small Parts, Pediatrics, MSK, Basic Cardiology
- Display modes: B, B/B, 4B, M, B/M, CFM, PW, Trapezoidal
- Advanced technologies: i-Image, THI, SRA, Compound imaging
- 16G memory card
- 500G harddisk (option)
- Streamlined workflow





• **Streamlined Workflow**

The multi-purpose user presets, comprehensive measurement & report system, built-in EasyView image archive system, quick image storage / retrieve / transfer, one-button direct print, make the complete workflow better than what you can dream of.



Various Measurements



Detailed Reports



EasyView Image Archive System

• **ONE KEY**



• **Support PC Printer** (HP DeskJet 1010, HP LaserJet 1020 Plus, HP LaserJet Pro P1102W, HP LaserJet Pro 200 M251n)



2.5MHz-5.0MHz Convex  
C3-A



5.3MHz-10.0MHz Linear  
L7M-A



5.3MHz-11.0MHz Linear  
L7S-A



2.5MHz-5.0MHz Micro-Convex  
MC3-A



4.5MHz-8.0MHz Transvaginal  
V6-A



4.5MHz-8.0MHz Micro-Convex  
MC6-A



5.0MHz-10.0MHz Trans-Rectal  
R7-A

## CHISON Medical Technologies Co., Ltd.

### Sales & Service Contact Address:

No.9, Xinhuihuan Road, Xinwu District, Wuxi, Jiangsu, China 214028

TEL: 0086-510-85310593 / 85310937 FAX: 0086-510-85310726 EMAIL: export@chison.com.cn

We reserve the right to make changes to this catalogue without prior notice. Please contact us or your local dealer for the latest information.

\* Please refer to the user manual for details